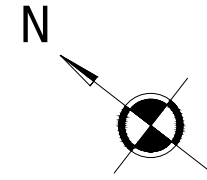
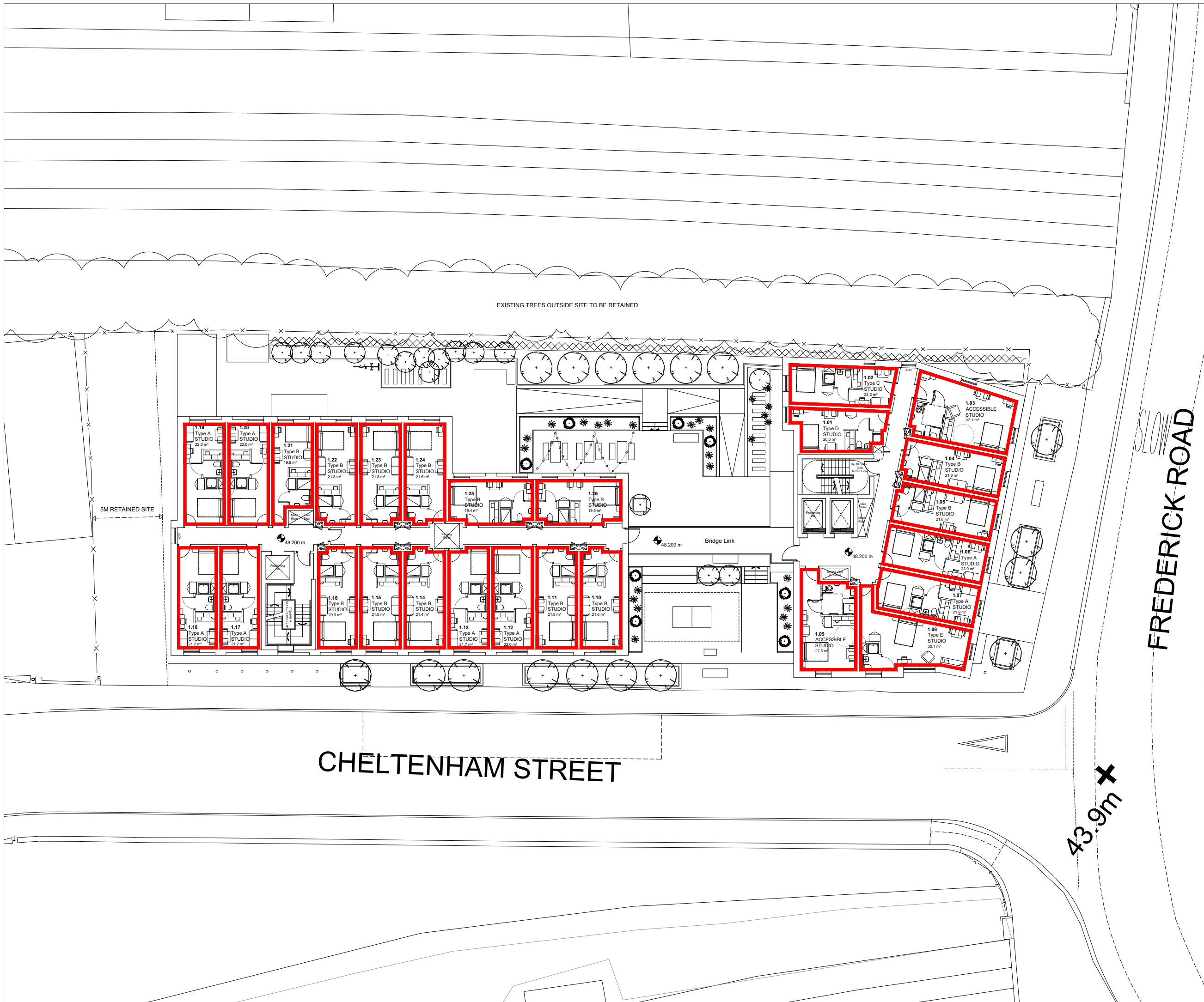


KEY

— PLOT BOUNDARY



DO NOT SCALE OFF THIS DRAWING © LEACH RHODES WALKER 2001

LeachRhodesWalker
Architects

info@lrw.co.uk | www.lrw.co.uk
H.Q. 50 Dearmans Place Manchester M3 5LH

Manchester +44 (0)161 833 0211 **London** +44 (0)207 993 1363

client X1 DEVELOPMENTS LTD			
project CHELTENHAM STREET SALFORD			
project no 8194	drawing no L(25)706	rev .	
description - First Floor Land Registry Approval Plan			
scale 1:250 @ A3	date drawn 14.06.22	drawn by WI	authorised by CJG
purpose of issue planning <input type="radio"/> building regs <input type="radio"/> tender <input type="radio"/> prelim./comment <input type="radio"/> approval <input checked="" type="radio"/> construction <input type="radio"/>			

CHELTENHAM STREET

FREDERICK ROAD

43.9m

48.200m

48.200m

48.200m

Bridge Link

5M RETAINED SITE

EXISTING TREES OUTSIDE SITE TO BE RETAINED

1.19 Type A STUDIO 22.0 m²

1.20 Type A STUDIO 22.0 m²

1.21 Type B STUDIO 19.8 m²

1.22 Type B STUDIO 21.8 m²

1.23 Type B STUDIO 21.8 m²

1.24 Type B STUDIO 21.8 m²

1.25 Type B STUDIO 19.4 m²

1.26 Type B STUDIO 19.5 m²

1.18 Type A STUDIO 23.2 m²

1.17 Type A STUDIO 23.2 m²

1.16 Type B STUDIO 20.9 m²

1.15 Type B STUDIO 21.8 m²

1.14 Type B STUDIO 21.4 m²

1.13 Type A STUDIO 23.2 m²

1.12 Type A STUDIO 23.0 m²

1.11 Type B STUDIO 21.8 m²

1.10 Type B STUDIO 21.8 m²

1.02 Type C STUDIO 22.2 m²

1.01 Type D STUDIO 20.5 m²

1.03 ACCESSIBLE STUDIO 32.1 m²

1.04 Type B STUDIO 21.8 m²

1.05 Type B STUDIO 21.8 m²

1.06 Type A STUDIO 23.0 m²

1.07 Type A STUDIO 21.9 m²

1.09 ACCESSIBLE STUDIO 27.4 m²

1.08 Type E STUDIO 30.1 m²